



# THE DAUPHIN of PHYTOCHEMISTRY Is MEDICINAL EMBRYONIC PHYTOTHERAPY (MEP)

By

Dominique Richard © 2014

The dauphin of phytochemistry is medicinal embryonic phytotherapy (MEP). By this, I mean that the next in the line of successor to the throne - reign of pharmaceutical superiority is embryonic phytotherapy, at least in regard to being the very best tools for detoxification, chelation, regenerative and preventive medicine. MEP is the unmatched megawatt-potency that no manmade supplements can duplicate nor compete with.

Presently, the dominating market for traditional herbal medicine is primarily adult phytotherapy (AP), but due to inconsistency, will soon be replaced by MEP. Plant extinctions from non-ecological practices, of whole plant being harvested are today unacceptable and additionally end up with an inferior finished product.

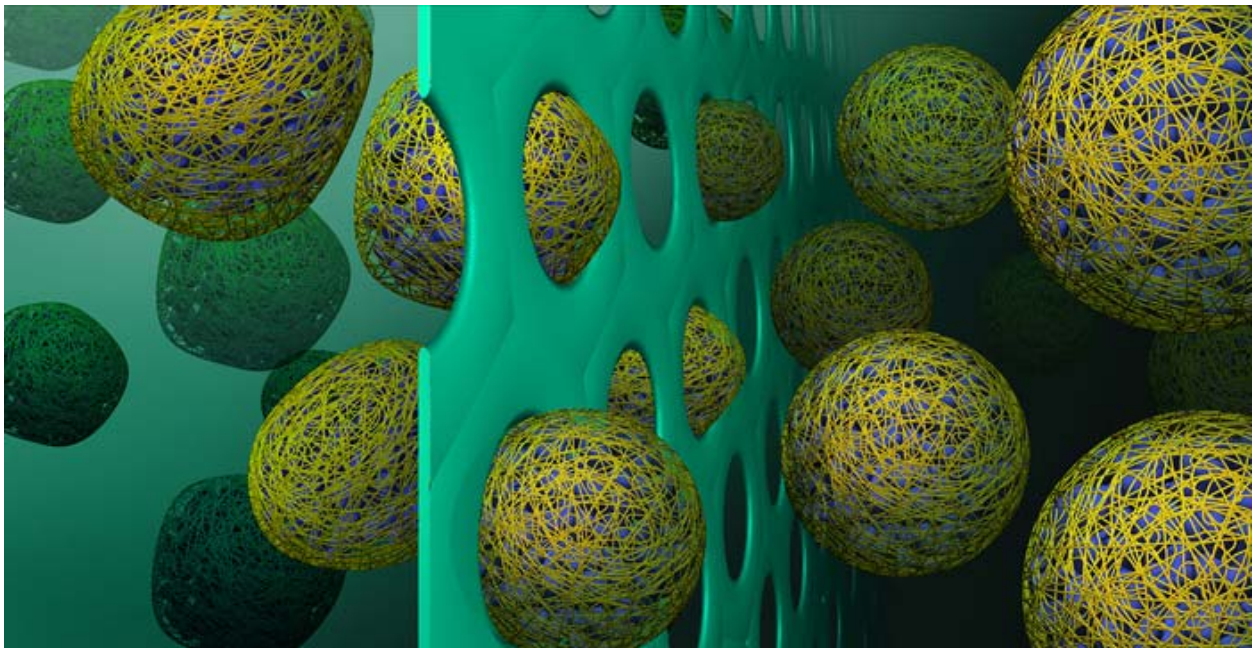
It has been known for quite some time the inconsistencies of AP batch to batch unreliable finished products. Many practitioners remain stuck in archaic practices and ideologies – wishful at best and difficult to change mindsets, just like those who still insist on keep using the 1DH dilution form of embryonic plant extracts. The latter was told due to intolerance, which is the furthest from the truth as it was only derived from the original tincture at a 1:20 ratio strength to IDH dilution only so it could fall under the Homeopathic umbrella. The proof is that 90% of the time for the last 10 years, I have used only the 1:20 and 1:10 strength at dosages 10 times above those of the 1DH dilution. Only once or twice have I ever seen any side effects and even then those minor side effects were soon abated by the discontinuance of the specific offender.

The chemical composition of embryonic phytotherapy (EP) differs vastly from what is found in AP. Numerous studies are now in agreement, EP contains higher concentration of most chemical constituents than what is found with AP.

Most importantly EP is free of nearly all toxic metals since it has yet had the chance to interact with the environment. Countless research studies have concluded that AP has higher amounts of inorganic and organic toxic metals and other contaminants.

EP composition contains higher amounts of everything from antiinflammatory fatty acids, to the DNA building block amino acids (AA), nucleic acids (NA), growth hormones (GH), immune hormones (IH), stress hormones (SH) and embryonic plant stem cells (PSC) and more biophotons. Whereas, AP contains adult plant stem cells, less biophotons, little hormones, more pro-inflammatory fatty acids, and less energy, less AA, NA and often tainted with toxic metals.

## MEP IS ENERGY BIOMEDICINE



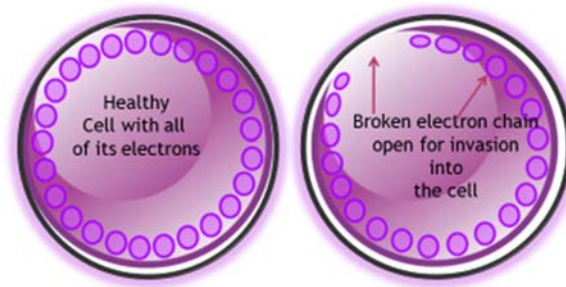
Artwork by Amadeo Bachar nano technology PSC/MEP Graphic artist

### A REVIEW of EMBRYONIC PLANT EXTRACTS PHARMACOLOGICAL COMPOSITION:

- Contains all of the "**genetic information**" from all parts of the plant "TOTUM". Contains higher concentration of phytochemicals.
- Nature's very own **Nanotechnology**: atomic, molecular, and supramolecular scale. Ultramolecular medicine capable of better **osmosis** into the nucleus of the cell. Many embryonic plant extracts are capable of crossing the blood-brain barrier (BBB) including punching holes into biofilm disassembling them and chelate sclerotic plaque and toxic metals. Small is beautiful but NANO is exceptional and more potent. Whereas, adult crude plant extracts do not possess these qualities and often burden the body more than are worth any benefits is what my research studies have shown.
- **BIOPHOTONS \*\*\*\* Electrically charged +++** The Light in Our Cells and in Plants.
  - Giving much needed light to dark cells - - - that are negatively charged from the toxins we are exposed to and the one's that we have deliberately chosen. These biophotons also restores the electron wall energy of our cell protecting us from invasion (Bischof, 1995).

- Increases oxygen in states of hypoxia
- Vibrational, Reduces - - - negatively charged electrical noises
- We Humans are primarily energetic and informational beings with field dependent chemical reactions.
- All living cells from plants to human beings emit biophotons, ultra-weak photon emission of electromagnetic wave in the optical range of the spectrum. Biophotons cannot be seen with the naked eye, but can be detected. Energy and information can move about the body through other means than nerve transmission and hormonal regulation via quantum coherence (Rattemeyer et al., 1981).

### BIOPHOTONS PROTECT THE CELLS FROM INVASION



- **PLANT STEM CELLS (PSC):** Meristem, the botanical term, refers to specialized cells responsible for plant growth and regeneration. Plant stem cells show remarkable promise, and they're already proving themselves powerful healers.
  - Assists in the rejuvenation of cells
  - Cell cycle regulation increases mitosis
  - Disrupt defective genes and inhibit DNA mistranslated information.
  - Epigenetic
  - Increases the activity of human lymphocytes
  - Intervene with genetic toxicity
  - Prevents collagen and elastin loss
  - Prevents necrosis
  - Reduces inflammation
  - Regulatory master genes
  - Repairs tissues
  - Restores the endothelial system
  - Sexual propagation
  - Signaling cascades
  - Stimulate human stem cell proliferation by 80%

- Support cellular turnover
  - Not only prevents and limits but also heals the cytological injury caused by toxins.
- **PHYTOHORMONES:** The hormones are made mostly in young meristem cells and much less in mature cells. Human hormones do not arouse plants' desires. But plant hormones can be stimulating to humans or at least to their immune cells.
    - Growth hormones: influences the endocrine system, neuro hormones, stimulates, excites, energize, **electrically charged +++** also work on DNA and RNA repair
    - Immune Hormones: modulate the immune and endocrine systems. Modulate the cytokines
    - Stress Hormones: adaptogens-endocrine, neuro-endocrine and immune defense systems.
  - **HIGH IN ANTIOXIDANTS:** reduces oxidative stress and damages caused by free radicals – reactive oxygen species (ROS), maintains Homeostasis, antibiotics, cytotoxic and play a role in the detoxification process.
  - **PHYTOCHELATIN ENZYMES SYNTHASE:** chelates, secrete and pool toxins from exerting their toxic effects.
  - **MANY ENZYMES:** are macromolecular biological catalysts. They are responsible for thousands of metabolic processes that sustain life. These highly selective catalysts, greatly accelerating both the rate and specificity of metabolic chemical reactions, from the digestion of food to the synthesis of DNA. They play many roles in the process of the various phases of detoxification process, increasing detoxifying enzymes. Attenuates inflammation. Most enzymes are proteins, although some catalytic RNA molecules have been identified (Smith, 1997; Grisham, 1999).
  - **NUCLEIC ACIDS:** Nucleic acids are macromolecules that play an essential role in the formation of the body's cells. They rejuvenate and repair. Of the many nucleic acids, DNA and RNA are the two most well-known.
  - **PEPTIDES** – small proteins are short polymers of amino acids. The function that a peptide carries out is dependent on which types of amino acids are involved in the chain. While peptides are involved in a number of ways in the body's chemistry, they can best be classified by their functions. Peptide hormones, Neuropeptides, and Polypeptide growth factors. In plants peptides are classified as: hormones, neuropeptides, alkaloids, and antibiotics. Chemical messengers between cells neurotransmitters, and endocrine receptors. Some peptides act as transporters that selectively allow certain substances to pass into the cell through the cell membrane (osmosis). Most enzymes are peptides. Peptides also contribute to bone matrix – shape and strength. In addition, they are an important structural component of the musculoskeletal system.
  - **AMINO ACIDS:** are the chemical units or "building blocks" of the body that make up proteins. Amino acids not only build proteins but some are critical to metabolic

functions and others act as precursors to neurotransmitters. Amino acids also act as cofactors to vitamins and minerals – not for absorption but to allow them to perform their duties correctly once they have been assimilated by us. Under certain conditions, **non-essential amino acids can become essential**. An insufficient supply of even *one* amino acid can cause serious health problems. The insufficiency would upset the body's continuous synthesis of proteins – leaving it short of the proteins it needs. This can result in negative nitrogen balance, an unhealthy condition in which the body excretes more nitrogen than it assimilates. Further, all of the essential amino acids must be present simultaneously in the diet in order for the other amino acids to be utilized – otherwise, the body remains in a negative nitrogen balance. A lack of vital proteins in the body can cause problems ranging from indigestion to depression to stunted growth. Another benefit of some amino acids is that they have antioxidant properties. Glutathione and Cysteine/N-Acetyl L-Cysteine are powerful antioxidants while Taurine and Tyrosine offer minor antioxidant properties.

- **ENDOPHYTES:** are natural antibiotics. It is an endosymbiont (any organism that lives within the body or cells of another organism), often a bacterium or fungus that lives within a plant for at least part of its life without exerting any apparent disease. Endophytes have been shown to combat pathogens and even cancers in animals, including humans.
- **PHYTOCHEMICALS:** refers to the thousands of chemical constituents found in the plant Kingdom. They are beyond of just being a food nutritive support and are no less essential for their biological activities and pharmacological benefits. The phytochemicals found in food are not sufficiently therapeutic for two reasons. One is our inability to metabolize many of them in sufficient amount to qualify them as therapeutic with sufficient pharmacological benefits. Secondly, the phytochemicals found in food does not contain anywhere near what is found in the huge herbal arsenal of phytochemical diversity. “To say that they are not essential to life” and that they are “nonnutritive” like most definitions given on what phytochemicals are is due to ignorance. They are not only nutritive and therapeutic, but also *essential* to our very own survival. Some plants contain in excess of *three hundred* phytochemicals.
- **ESSENTIAL OILS:** are a concentrated hydrophobic liquid, also known as **volatile oils, ethereal oils, aetherolea**, or simply as the “oil of” the plant from which they were extracted and carries a distinctive **aroma – scent, or essence**, of the plant. They contain mainly sesquiterpenes, pseudo-alkaloids, phenylpropanoids, and monoterpenes. Mainly composed of a class of organic compounds built of “isoprene units.” An isoprene unit is a set of five connected carbon atoms with eight hydrogen's attached. Molecules built of isoprene units are all classified as “terpenes.” They have the unsurpassed ability to osmosis and cross the blood-brain barrier (BBB). Oxygenated sesquiterpenes are the most abundant, and are molecules that deliver oxygen to the cells. Sesquiterpenes can also erase or deprogram miswritten code in the DNA and can erase that garbled information. They are most valuable in neurodegenerative diseases and cancers.

***Synergy at its Best***

- **Phenylpropanoids** biological activities are to detoxify the receptor sites allowing them to properly transfer hormones, peptides, neurotransmitters, steroids, and other intracellular messengers.
- **Sesquiterpenes, which** are secondary metabolites, deprogram or erase the wrong information from cellular memory stored in the DNA and increases oxygen to the cells.
- **Monoterpenes** reprogram the cells with the correct information so they can function properly.
- **OLIGO-ELEMENTS:** are far away from the mega dosing culture.
  - Increases mitosis
  - These minerals regulate the body through their direct action:
    - Central nervous system
    - The endocrine system
    - Immune system
    - Catalysts that speed up metabolism at the cellular level.
    - They provide essential nutrition to stop free radical activity.
  - Oligo-elements are the biological essential mineral elements, which catalyze or regulate the action of a great number of **enzymes** in living organisms. They are vital to the smooth functioning of the **protein systems, enzymatic** and **genetic**.
  - Their specific roles are threefold, as they occur at the **chemical, physical** and **informational level**. They provide the role as **co-enzyme factors** that unify the operation of vitamins. Oligo-elements are necessary for enzyme synthesis (catabolism) of a **specific hormone**. They intervene in the unique setting of the hormone to its **receptor**. The metal part or blocks **ionic phenomena** due to a hormone. PSC contains **27** oligo-elements.
- **Vitamins & Minerals and their Cofactors:** some plants contains more vitamins and mineral than any manmade supplements.
- **Organic Glycerine** from Palm excellent source of Vitamin E tocotrienol (solvent). It helps in stabilizing some phytochemicals from oxidation.
- **Organic Grape Alcohol** 60% (solvent) the best to fully extract all phytochemicals and phytohormones with a degree of higher of bioavailability.
- **Water** which occurs naturally in the fresh harvested embryonic plant tissues and serves as a solvent.

Now that you have a general overview of its chemical composition. Are we'd better been using them diluted or full-spectrum strength? In today's world with the many health problems and chronic diseases, we are currently faced with. We need reliable and pharmacologically active – dependable finished extracts in order to be sufficiently

therapeutic. We cannot afford using inferior products that do not work or add unnecessary stress like that of toxic metals or debris that drives health issues deeper into problems.

In general embryonic plant requires only 1/3 the dose of most adult plant extracts, and this is achieved at a lower 1:10 to 1:20 ratio strength, whereas adult plant extracts are on average 1:5 this also vouch for embryonic plant extracts superior potency. The point in matter is that when you have an energetic active alive extract that is what you need instead of the devoid mega dose of isolates doing much about nothing beneficial and work more like that of a drug disrupting everything else in its path causing many more imbalances than is worth.

To a true, natural prescriber the oath of “first do no harm” becomes his mantra not just an oath. We should all remember to give first respect to *home remedies* and second move on to MEP and when absolutely no other alternatives are available move on to drugs. Health-care professional love nothing more than to castigate about home remedies. Way too many physicians believe (not knowing) home remedies are worthless and that only FDA-approved medicines are worthwhile pursuing how nearsighted!

### **Antisenescence Visual Changes Can be Seen with MEP**

Very noticeable physiological differences exist between AP, and EP is that the latter when used for as little as a few months, a person starts looking younger and brighter, the sclera of the eyes becomes whiter something that is never observed from the use of adult plant extracts.

This was the first observation in the beginning of my research, for which I have spent thirty-eight years studying. My conclusion, soon to be published, will undoubtedly reveal in great detail the many pharmacological benefits which improve both the quality of life and increase longevity.

MEP extracts contain many phytochemical compounds that are NAD<sup>+</sup> precursor and Sirtuin activators, improving mitochondrial activity to improve intracellular communication promotes mitochondria homeostasis and thus increases energy, and they are the very best agent for anti-senescence.

I remain devoted to being the agent of Nature's AGENTS. In their defense and protection. Ecologically conscious, medicinal embryonic phytochemistry (MEP) never endangers the extinction of any plant species.

Remember that all of the earth is nothing more than a fragile balance and that we must not take for granted and take from her beyond what she can sustain. Over harvesting, particularly due to commercial harvesting of medicinal and edible plants, has brought many once plentiful plant species to the brink of extinction.

As 'plant people', we should adopt a green guardianship relationship for Mother Earth whom is so plentifully providing us with her bounty but not endless if we keep on robbing her beyond that of her capacity.

Dominique Richard

References:

Bischof Marco, Biophotons - The Light in Our Cells. Publication date: March 1995. German publisher: Zweitausendeins, Frankfurt. 522 pp., more than 160 illustrations, 5 color plates, extensive bibliography and index. <http://www.zweitausendeins.de/> ISBN 3-86150-095-7.

Grisham, Charles M.; Reginald H. Garrett (1999). Biochemistry. Philadelphia: Saunders College Pub. pp. 426–7. ISBN 0-03-022318-0.

Rattemeyer M., Popp F. A., Nagl, W. (1981) Evidence of photon emission from DNA in living systems, Nature Wissenshanften, 68 (11): 572-573.

Smith AL (Ed) (1997). Oxford dictionary of biochemistry and molecular biology. Oxford [Oxfordshire]: Oxford University Press. ISBN 0-19-854768-4.